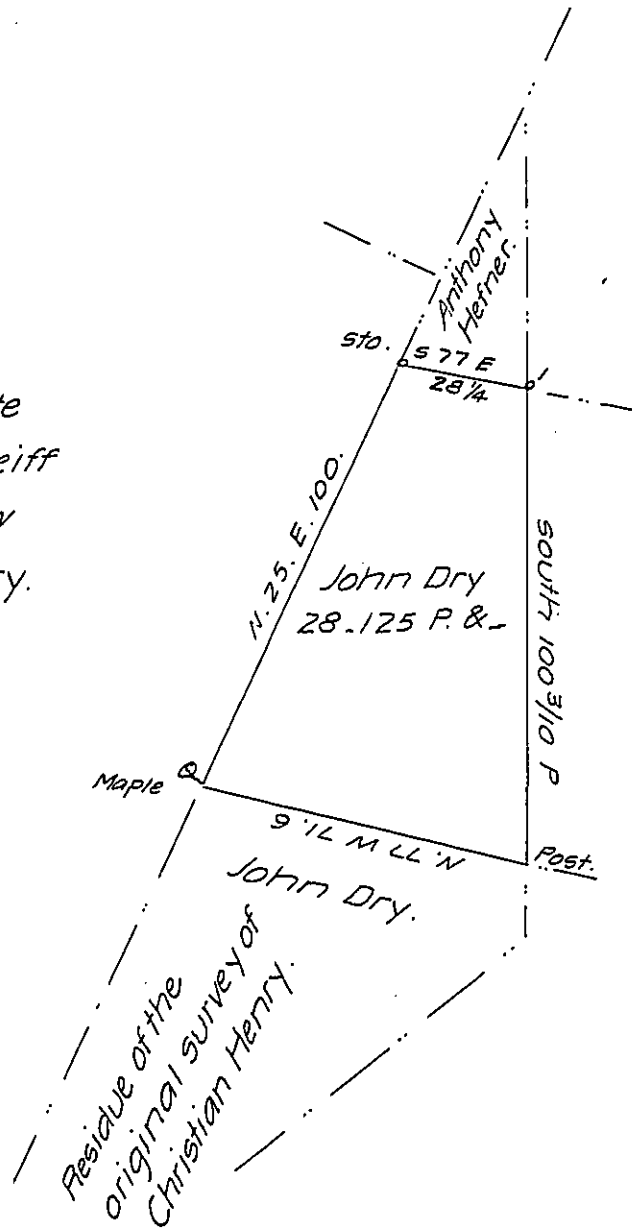


late  
Conrad Reiff  
now  
John Dry.



late  
Peter Reiff  
now  
John Dry

Situate in Rockland township, Berks County, Containing Twenty eight  
acres, one hundred and twenty five perches & all<sup>s</sup> part of As. 116. 20 ps & -  
Surveyed on Warrant dated Oct: 1, 1748, granted to Christian Henry, now  
surveyed for John Dry. May 17, 1828.

Matthias S. Richards D.S.

Gabriel Hiester, Esq.  
Surveyor General

IN TESTIMONY that the above is a copy of the original remaining on file in  
the Department of Internal Affairs of Pennsylvania, made  
conformably to an Act of Assembly approved the 16th day of  
February 1833, I have hereunto set my hand and caused  
the Seal of said Department to be affixed at Harrisburg,  
this thirtieth day of January 1907

*Isaac P. Brown*  
Secretary of Internal Affairs.